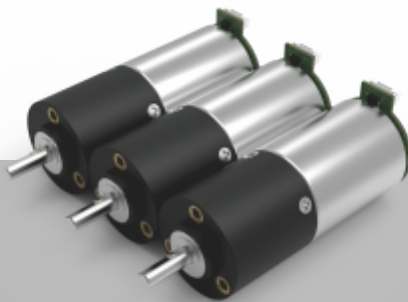


24  
mm

Plastic  
P  
塑料



# ZWBPD024024

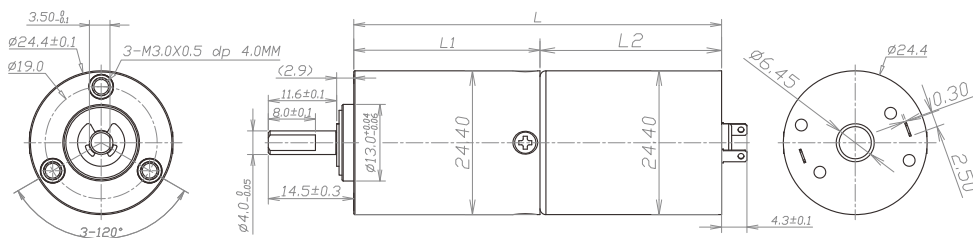
## 齿轮箱规格 Gearbox specifications

|        |                       |            |         |                                |             |                |        |                 |
|--------|-----------------------|------------|---------|--------------------------------|-------------|----------------|--------|-----------------|
| 外径     | Outer diameter        | 24mm       | 轴承      | Bearing                        | 含油轴承        | Porous bearing | 滚动轴承   | Rolling bearing |
| 材质     | Material              | 塑料 Plastic | 轴向窜动    | Axial endplay                  | ≤0.2mm      |                | ≤0.2mm |                 |
| 旋转方向   | Direction of rotation | cw & ccw   | 输出轴径向负载 | Radial loading on output shaft | ≤50N        |                | ≤100N  |                 |
| 齿轮箱回程差 | Gear backlash         | ≤3° (可定制)  | 工作温度    | Operating temperature range    | -20 ~ +85°C |                |        |                 |

## 齿轮级数 Gearbox stages

|                |                                     | 1     | 2            | 3                   | 4                            |
|----------------|-------------------------------------|-------|--------------|---------------------|------------------------------|
| 减速比            | Reduction ratio                     | 4 / 6 | 16 / 24 / 36 | 64 / 96 / 144 / 216 | 256 / 384 / 576 / 864 / 1296 |
| 最大容许扭力 (gf.cm) | Max rated torque of gearbox (gf.cm) | 15000 | 15000        | 15000               | 15000                        |
| 瞬间容许力矩 (gf.cm) | Instant torque of gearbox (gf.cm)   | 45000 | 45000        | 45000               | 45000                        |
| 齿轮箱效率          | Gearbox efficiency                  | 85    | 73           | 65                  | 58                           |
| 长度 (mm)        | Length L1 (mm)                      | 18.5  | 24.5         | 31.5                | 38.65                        |

## 技术插图 | Technical drawing



## 马达规格参数 Motor specifications

|                           |  |      |             |           |
|---------------------------|--|------|-------------|-----------|
| 马达(可选择) Motors            | 直流有刷电机、空心杯电机、无刷电机、步进电机<br>Brushed DC motor, Coreless motor, Brushless motor, Stepper motor | 输入速度 | Input speed | ≤15000rpm |
| 电压(可选择) Voltage(Optional) | 3-24V  | 电流   | Current     | 300mA max |

参考数据 (马达定义值): 12v 6000rpm 下表根据马达定义值测试, 数据只作为参考值

| 型号 Model         | Rated Speed<br>额定转速 | Max Speed<br>最高转速 | Max Rated Torque<br>额定容许力矩 | Max Instant Torque<br>瞬间容许力矩 | Reduction ratio<br>减速比 | Length<br>减速箱长 L1 | Overall Length<br>总长 L |
|------------------|---------------------|-------------------|----------------------------|------------------------------|------------------------|-------------------|------------------------|
|                  | rpm                 | rpm               | gf.cm                      | gf.cm                        |                        | mm                | mm                     |
| ZWBPD024024-4    | 1875                | 7500              | 15000                      | 45000                        | 4                      | 18.5              | 49.3                   |
| ZWBPD024024-6    | 1250                | 5000              | 15000                      | 45000                        | 6                      |                   |                        |
| ZWBPD024024-16   | 469                 | 1875              | 15000                      | 45000                        | 16                     | 24.5              | 55.3                   |
| ZWBPD024024-24   | 313                 | 1250              | 15000                      | 45000                        | 24                     |                   |                        |
| ZWBPD024024-36   | 208                 | 833               | 15000                      | 45000                        | 36                     |                   |                        |
| ZWBPD024024-64   | 117                 | 469               | 15000                      | 45000                        | 64                     | 31.5              | 62.3                   |
| ZWBPD024024-96   | 78                  | 313               | 15000                      | 45000                        | 96                     |                   |                        |
| ZWBPD024024-144  | 52                  | 208               | 15000                      | 45000                        | 144                    |                   |                        |
| ZWBPD024024-216  | 35                  | 139               | 15000                      | 45000                        | 216                    |                   |                        |
| ZWBPD024024-256  | 29                  | 117               | 15000                      | 45000                        | 256                    | 38.65             | 69.45                  |
| ZWBPD024024-384  | 20                  | 78                | 15000                      | 45000                        | 384                    |                   |                        |
| ZWBPD024024-576  | 13                  | 52                | 15000                      | 45000                        | 576                    |                   |                        |
| ZWBPD024024-864  | 9                   | 35                | 15000                      | 45000                        | 864                    |                   |                        |
| ZWBPD024024-1296 | 6                   | 23                | 15000                      | 45000                        | 1296                   |                   |                        |

注: 可根据客户要求定制 Please contact us for customized products