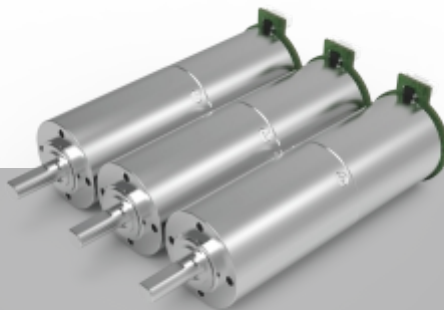


28
mm

Metal
五金



ZWBMD028028

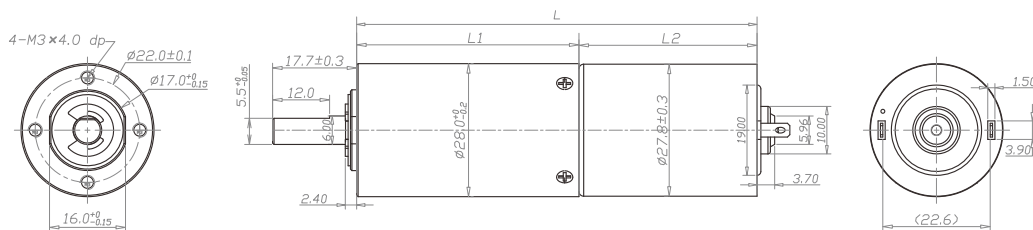
齿轮箱规格 Gearbox specifications

外径 Outer diameter	28mm	轴承 Bearing	含油轴承 Porous bearing	滚动轴承 Rolling bearing
材质 Material	五金 Metal	轴向窜动 Axial endplay	≤0.1mm	≤0.1mm
旋转方向 Direction of rotation	cw & ccw	输出轴径向负载 Radial loading on output shaft	≤120N	≤170N
齿轮箱回程差 Gear backlash	≤2° (可定制)	工作温度 Operating temperature range	-30 ~ +100°C	

齿轮级数 Gearbox stages

	1	2	3	4
减速比 Reduction ratio	4 / 6	16 / 24 / 36	64 / 96 / 144 / 216	256 / 384 / 576 / 864 / 1296
最大容许扭力 (gf.cm) Max rated torque of gearbox (gf.cm)	40000	40000	40000	40000
瞬间容许力矩 (gf.cm) Instant torque of gearbox (gf.cm)	120000	120000	120000	120000
齿轮箱效率 Gearbox efficiency	80	64	51	41
长度 (mm) Length L1 (mm)	21.3	29.8	38.3	46.8

技术插图 | Technical drawing



马达规格参数 Motor specifications

马达(可选择) Motors	直流有刷电机、步进电机、无刷电机 DC brush motor, Stepper motor, Brushless motor	输入速度 Input speed	≤15000rpm
电压(可选择) Voltage(Optional)	3-24V	电流 Current	400mA max

参考数据 (马达定义值): 24v 7700rpm 下表根据马达定义值测试, 数据只作为参考值

型号 Model	Rated Speed 额定转速	Max Speed 最高转速	Max Rated Torque 额定容许力矩	Max Instant Torque 瞬间容许力矩	Reduction ratio 减速比	Length 减速箱长 L1	Overall Length 总长 L
	rpm	rpm	gf.cm	gf.cm		mm	mm
ZWBMD028028-4	1875	7500	40000	120000	4	21.3	58.8
ZWBMD028028-6	1250	5000	40000	120000	6		
ZWBMD028028-16	469	1875	40000	120000	16	29.8	67.3
ZWBMD028028-24	313	1250	40000	120000	24		
ZWBMD028028-36	208	833	40000	120000	36		
ZWBMD028028-64	117	469	40000	120000	64	38.3	75.8
ZWBMD028028-96	78	313	40000	120000	96		
ZWBMD028028-144	52	208	40000	120000	144		
ZWBMD028028-216	35	139	40000	120000	216		
ZWBMD028028-256	29	117	40000	120000	256	46.8	84.3
ZWBMD028028-384	20	78	40000	120000	384		
ZWBMD028028-576	13	52	40000	120000	576		
ZWBMD028028-864	9	35	40000	120000	864		
ZWBMD028028-1296	6	23	40000	120000	1296		

注: 可根据客户要求定制 Please contact us for customized products